

## PHOTOMETRIC REPORT

Project Name: New Building Four Stories Residential and Commercial Building

Property Owner: Logica Real Asset Investments

Property Address: 324 NW 6<sup>TH</sup> ST, POMPANO BEACH, FL 33060

Fernando Márquez, PE

P.E. # 73987

3/06/2023

**DRC**<sup>1/8</sup>

PZ22-12000032

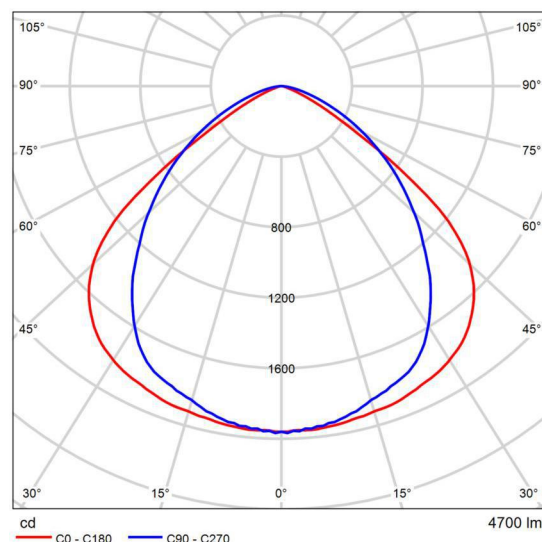
07/19/2023

## Product data sheet

Beghelli SpA - ACCIAIO EX LED 2X36 SD 4000K



Article No.	A236EXSDo
P	35.0 W
$\Phi$ Luminaire	4700 lm
Luminous efficacy	134.3 lm/W
CCT	4000 K
CRI	80



Polar LDC

**TECHNICAL CHARACTERISTICS:** Pond ceiling light for ATEX classified areas (G02; D22) in STAINLESS steel sheet (AISI 304), LED technology, through wiring. Equipped with SmartDrive LEDs (possibility to integrate programming, dimming and consumption monitoring functions) energy-saving electronic power supply. The device designed to withstand magnetic disturbances typical of industrial environments (EN 61000-6-2).

Degree of Protection: IP66.

Degree of Shock Protection: IK09 (10J).

Operating temperature: -30÷50°C with power adjustment intervention.

**BODY:** High mechanical resistance in stainless steel sheet (AISI 304) with die-cast aluminum closure heads with safety screws. Cable input with PG13 (or M20) press on removable head.

**REFLECTOR:** Lamellar with regular aluminum cells with a high reflection mirror surface. Low luminance diffuser distribution (dark light).

**DIFFUSER:** In solidarity with the casing, with surface microspheres to reduce glare; hardened safety glass resistant to shocks, thickness 3.2 mm.

**GASKET:** Silicon rubber.

**LED SOURCES:** Neutral White LED sources (4000K Ra>80 SDCM3). No related photobiological risk (class exempt RGO acc. EN62471).

**DRIVE:** Built-in SMART Driver LED. Constant luminous flux as the power supply voltage changes. Protection against network surges. Power system reliability: MTBF >80000h\* at Tamb Ref. Possibility of

Glare evaluation according to UGR												
p Ceiling		70	70	50	50	30	70	70	50	50	30	
p Walls		50	30	50	30	30	50	30	50	30	30	
p Floor		20	20	20	20	20	20	20	20	20	20	
Room size X Y		Viewing direction at right angles to lamp axis					Viewing direction parallel to lamp axis					
2H	2H	21.5	22.8	21.8	23.0	23.2	21.1	22.3	21.4	22.5	22.8	
	3H	21.5	22.6	21.8	22.9	23.1	21.8	22.9	22.1	23.2	23.4	
	4H	21.5	22.5	21.8	22.8	23.0	22.0	23.0	22.3	23.3	23.6	
	6H	21.4	22.3	21.7	22.6	22.9	22.1	23.0	22.4	23.3	23.6	
	8H	21.4	22.3	21.7	22.6	22.9	22.1	23.0	22.4	23.3	23.6	
4H	12H	21.3	22.2	21.7	22.5	22.8	22.1	22.9	22.4	23.3	23.6	
	2H	21.9	22.9	22.2	23.2	23.4	21.6	22.6	21.9	22.9	23.2	
	3H	21.9	22.8	22.3	23.1	23.4	22.4	23.3	22.8	23.6	23.9	
	4H	21.9	22.6	22.3	23.0	23.3	22.7	23.4	23.1	23.8	24.1	
	6H	21.8	22.5	22.2	22.9	23.2	22.8	23.5	23.2	23.9	24.2	
8H	8H	21.8	22.4	22.2	22.8	23.2	22.8	23.5	23.3	23.8	24.3	
	12H	21.7	22.3	22.2	22.7	23.1	22.8	23.4	23.3	23.8	24.2	
	4H	21.9	22.5	22.3	22.9	23.3	22.6	23.3	23.1	23.6	24.1	
	6H	21.8	22.3	22.3	22.8	23.2	22.8	23.3	23.3	23.8	24.2	
	8H	21.8	22.2	22.3	22.7	23.2	22.9	23.3	23.3	23.8	24.2	
12H	12H	21.8	22.2	22.3	22.6	23.1	22.9	23.3	23.4	23.7	24.2	
	4H	21.9	22.4	22.3	22.8	23.3	22.6	23.2	23.0	23.6	24.0	
	6H	21.8	22.3	22.3	22.7	23.2	22.8	23.2	23.3	23.7	24.2	
	8H	21.8	22.2	22.3	22.6	23.1	22.8	23.2	23.3	23.7	24.2	
Variation of the observer position for the luminaire distances S												
S = 1.0H		+0.9 / -0.8					+0.2 / -0.3					
S = 1.5H		+2.0 / -4.0					+0.7 / -1.2					
S = 2.0H		+3.4 / -6.7					+1.2 / -2.2					
Standard table		BK01					BK03					
Correction summand		4.0					5.3					
Corrected glare indices referring to 4700lm Total luminous flux												

UGR diagram (SHR: 0.25)

# DRC

PZ22-12000032<sup>1</sup>

07/19/2023

## Product data sheet

Beghelli SpA - ACCIAIO EX LED 2X36 SD 4000K

remote control (wireless/DALI compatible) and integration of the following functions: Self-dimming, Programming and consumption monitoring.

Possibility of OPTICOM interface (remote control of the product via smartphone).

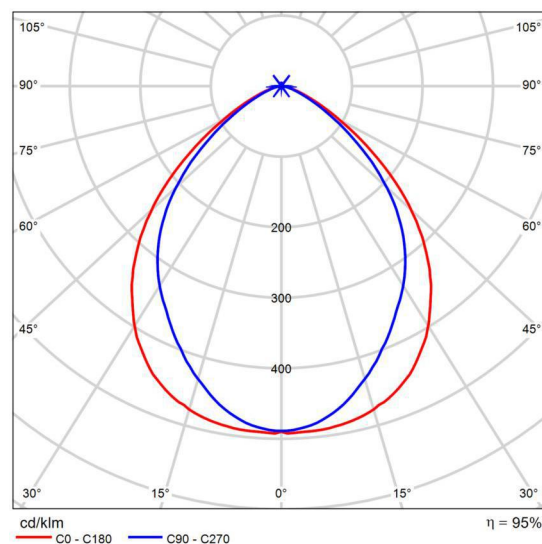
INSTALLATION: Device suitable for use in environments classified as ATEX (ATEX classification: II 3G ExnA II B T4 Gc; II 3D ExtD A22 T80Dc) and in industrial environments characterized by the presence of volatile oils and chemicals even in harsh thermal operating conditions. Suitable for installation on normally flammable surfaces, ceiling or suspension by means of special accessories provided. Ceiling fixing brackets equipped with a safe restraint system.

## Product data sheet

NIKKON - 100W LED Floodlight (5700K)



Article No.	OMEGA I-DRIVE K10120
P	100.0 W
$\Phi_{\text{Lamp}}$	9500 lm
$\Phi_{\text{Luminaire}}$	9053 lm
$\eta$	95.29 %
Luminous efficacy	90.5 lm/W
CCT	5700 K
CRI	99



Polar LDC

NIKKON OMEGA I-DRIVE K10120 100W LED Floodlight (5700K)

Building 2 · Storey 1 · Room 2

**Luminaire list** $\Phi_{\text{total}}$ 

79900 lm

 $P_{\text{total}}$ 

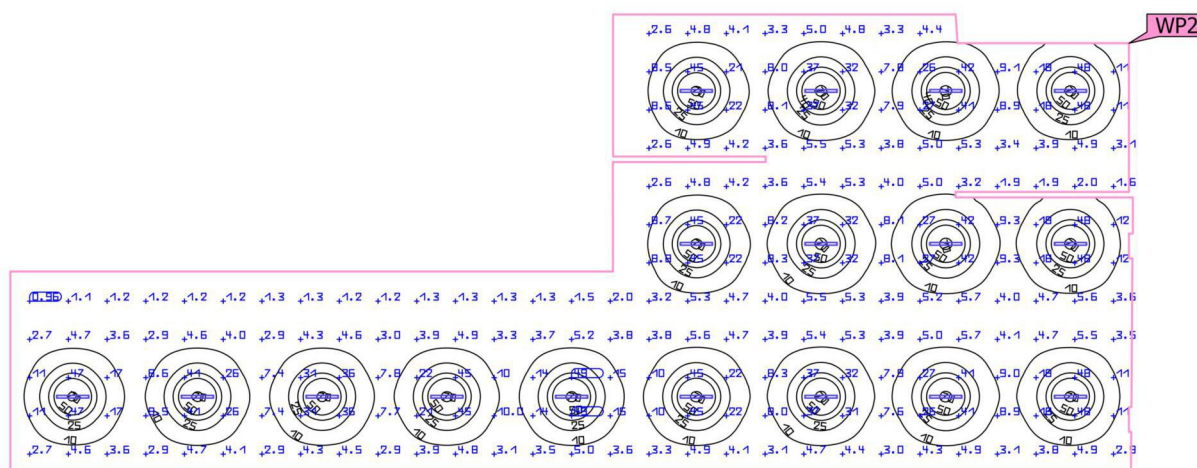
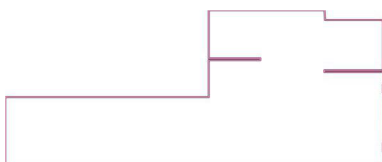
595.0 W

Luminous efficacy

134.3 lm/W

pcs.	Manufacturer	Article No.	Article name	P	$\Phi$	Luminous efficacy
17	Beghelli SpA	A236EXSD o	ACCIAIO EX LED 2X36 SD 4000K	35.0 W	4700 lm	134.3 lm/W

Building 2 · Storey 1 · Room 2 (Light scene 1)

**Working plane (Room 2)**

Properties	$\bar{E}$ (Target)	$E_{min}$	$E_{max}$	$\bar{E}/E_{min}$ (Target)	$E_{max}/E_{min}$	Index
Working plane (Room 2)	13.6 fc	0.77 fc	72.5 fc	17.7	94.4	WP2
Perpendicular illuminance (adaptive)	( $\geq 46.4$ fc)			( $\leq 1.67$ )		
Height: 2.625 ft, Wall zone: 0.000 ft	✗			✗		

Utilisation profile: DIALux presetting (34.2 Standard (office))

Outdoor space 1

**Luminaire list** $\Phi_{\text{total}}$ 

90530 lm

 $P_{\text{total}}$ 

1000.0 W

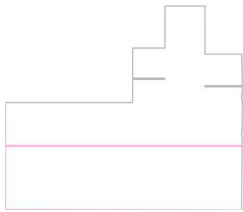
Luminous efficacy

90.5 lm/W

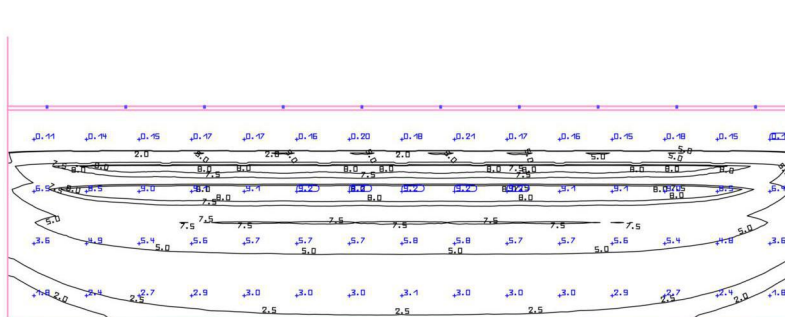
pcs.	Manufacturer	Article No.	Article name	P	$\Phi$	Luminous efficacy
10	NIKKON	OMEGA I- DRIVE K10120	100W LED Floodlight (5700K)	100.0 W	9053 lm	90.5 lm/W

**DRC**PZ22-12000032<sup>6</sup>  
07/19/2023

Outdoor space 1 (Light scene 1)

**Working plane (Outdoor space 1)**

WP1



Properties	$\bar{E}$ (Target)	$E_{min}$	$E_{max}$	$\bar{E}/E_{min}$ (Target)	$E_{max}/E_{min}$	Index
Working plane (Outdoor space 1) Perpendicular illuminance (adaptive) Height: 0.000 ft, Wall zone: 0.000 ft	4.20 fc ( $\geq 4.64$ fc)	0.070 fc	9.35 fc	60.4 ( $\leq 2.50$ )	134	WP1
	✗			✗		

Utilisation profile: DIALux presetting (5.1.4 Standard (outdoor transportation area))

DRC

 PZ22-12000032<sup>7</sup>  
 07/19/2023